

MIRASOL PARCEL ONE

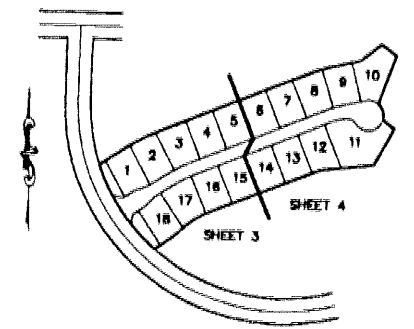
PART OF GOLF DIGEST P.C.D.
SECTION 4, TOWNSHIP 42 SOUTH, RANGE 42 EAST,
CITY OF PALM BEACH GARDENS,
PALM BEACH COUNTY, FLORIDA
NOVEMBER, 2000 SHEET 3 OF 4

68

STATE OF FLORIDA
COUNTY OF PALM BEACH
THIS PLAT WAS FILED FOR
RECORD
THIS _____ DAY OF _____
AD, 2000 AND DULY RECORDED
IN PLAT BOOK _____ ON PAGE(S)
_____ AND _____
DOROTHY H. WILKEN, CLERK
BY: _____, D.C.

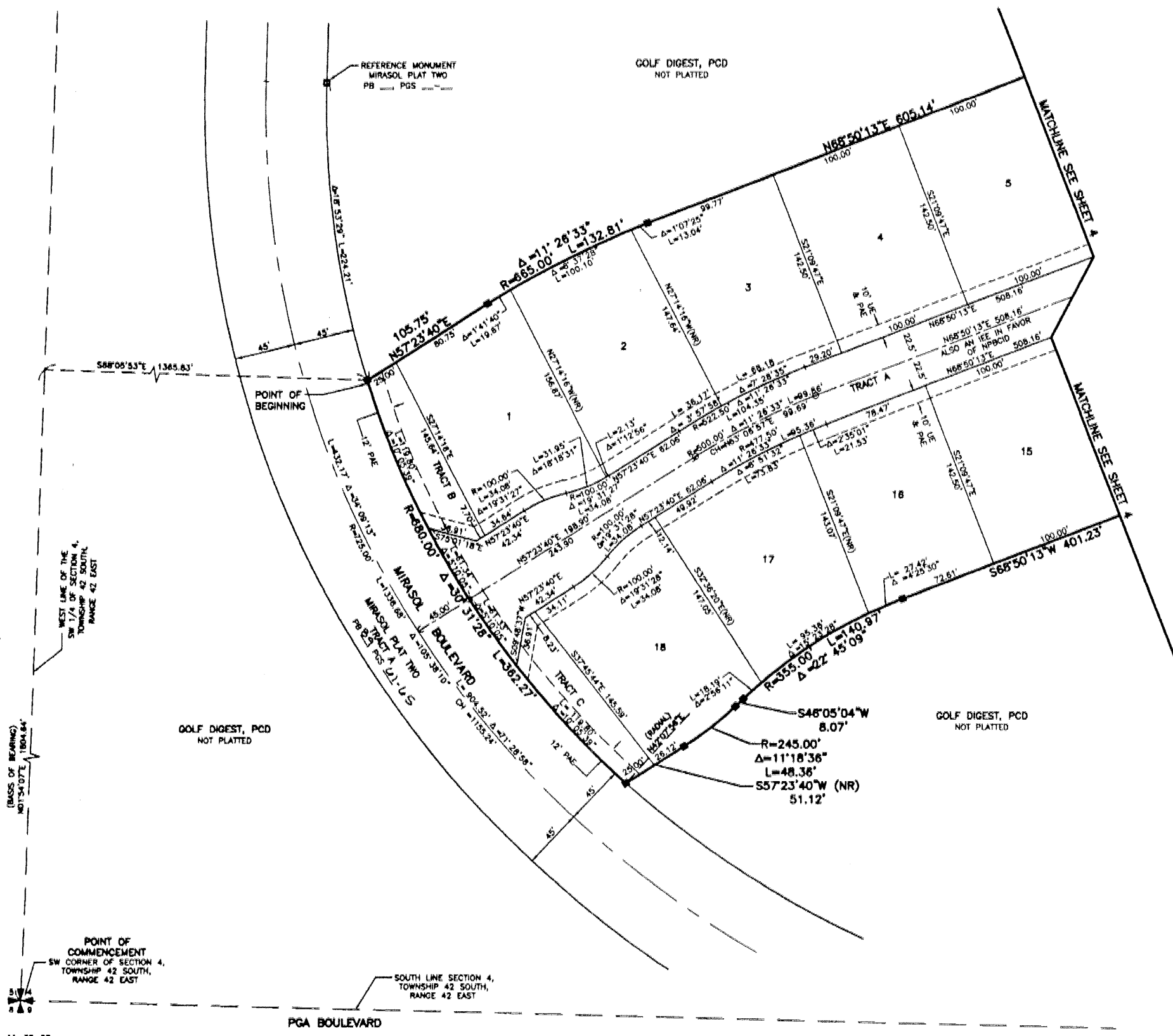


CIRCUIT COURT SEAL



SHEET LOCATION MAP
NOT TO SCALE

- LEGEND**
- Δ CENTRAL (DELTA) ANGLE
 - CH CHORD
 - DE DRAINAGE EASEMENT
 - IEE INGRESS-EGRESS EASEMENT
 - L ARC LENGTH
 - NPBC10 NORTHERN PALM BEACH COUNTY IMPROVEMENT DISTRICT
 - (NR) NON-RADIAL
 - ORB OFFICIAL RECORD BOOK
 - PAE PEDESTRIAN ACCESS EASEMENT
 - PB PLAT BOOK
 - PB(5) PAGE(S)
 - PCD PLANNED COMMUNITY DEVELOPMENT
 - R RADIUS
 - (TYP) TYPICAL
 - UE UTILITY EASEMENT
 - PERMANENT REFERENCE MONUMENT FOUND LB 04B (4" x 4" CONCRETE)
 - PERMANENT REFERENCE MONUMENT SET LB 04B (4" x 4" CONCRETE)
 - SET LB 04B
 - PERMANENT CONTROL POINT
 - CENTERLINE



THIS INSTRUMENT WAS PREPARED BY MARY HANNA CLODFELTER, P.S.M. IN THE OFFICES OF MOCK, ROOS & ASSOCIATES, INC., 5720 CORPORATE WAY, WEST PALM BEACH, FLORIDA 33407.

SCALE: 1"=40'
P.A. NO.: 99313.00
DATE: MARCH 2000
DRAWING NO.: 42-42-04-34

FLORIDA L.B. NO. 48
MOCK ROOS
ENGINEERS & PLANNERS
5720 Corporate Way, West Palm Beach, Florida 33407
(561) 683-3115, fax 478-7248

MIRASOL PARCEL ONE
PART OF GOLF DIGEST P.C.D.
SITUATED IN SECTION 4,
TOWNSHIP 42 SOUTH, RANGE 42 EAST,
CITY OF PALM BEACH GARDENS,
PALM BEACH COUNTY, FLORIDA

SHEET 3 OF 4

S:\Users\mroos\My Documents\2000\42-42-04-34.dwg 11/20/00 08:54:18 AM EST

REV: 11-30-00
CAD FILE: TAYLOR\PA01RPO2